

MEMBERSHIP MATTERS

2024 MEMBERSHIP RENEWAL

Now that May is here, I will soon be asking you for your annual subs. Payment can be made any time from now but must be paid **by 30th June** to avoid your membership lapsing.

For an Individual the cost remains at £15, or £25 for two people at the same address. If you are fortunate to have had a 100th birthday your membership cost is zero!

I will be emailing you with payment details during May. As well as paying by BACS, you can also pay at any coffee morning or monthly meeting by Debit card, cash or cheque.

Any queries, please email members@waterloovilleu3a.org.uk or phone 07769 266879

Kevin Stock, Membership Secretary

COFFEE MORNINGS 10:00 am – 11:30 am :

Sacred Heart Church, 356 London Road, Waterlooville, PO7 7SR



Monday 13th May & Monday 10th June

All members, particularly new ones, are very welcome.

Find out about our interest groups and social events.

Bring along your friends. Have a cuppa and chat, make new friends.

MAY GENERAL MEETINGS 2:00 pm – 4:00 pm :

Wed 15th May – NEW additional general meeting at Cosham

Cosham Baptist Church, Havant Road, Cosham, PO6 2QZ

An Unkown Heroine

Speaker : Jo Bogle

Wed 22nd May

Sacred Heart Church, 356 London Road, Waterlooville, PO7 7SR

30 years with Hampshire Constabulary

Speaker : Jackie Dimmock

Hear about Jackie's career as a WPC for Hampshire Constabulary progressing from the most junior as a 25-year old in urban policing, child protection, vulnerable adults, public protection unit, working in schools and the scenes of crime unit.



JUNE GENERAL MEETINGS 2:00 pm – 4:00 pm :

Wed 19th June – NEW additional general meeting at Cosham

Cosham Baptist Church, Havant Road, Cosham, PO6 2QZ

Pompey FC

Speaker : Colin Farmery

Wed 26th June

Sacred Heart Church, 356 London Road, Waterlooville, PO7 7SR

The Lumberjills of WW II

Speaker : Joanna Foat

The Lumberjills were the unsung heroines of World War II. As Britain faced the dire need for timber amidst the chaos of war, the Lumberjills emerged as beacons of strength and resilience. With their axes and saws in hand, these trailblazing women stepped forward to fill the void left by conscripted men, shattering gender stereotypes with every tree they felled. Their contributions were nothing short of monumental, supplying crucial timber used in railways, mining, aircraft, and even gas mask filters. Yet, their story has remained largely forgotten, overshadowed by the more well-known tales of the Women's Land Army.

SPEAKER'S CORNER

Review of April's talk :

"SS Shieldhall" - Speaker : Paul Hurst

An audience of 80 members and guests were treated to an interesting and amusing talk by one of our members, Paul Hurst.

After a career in horticulture, Paul retired and was accepted as a volunteer on SS Shieldhall - a heritage cargo/passenger steamship which is part of the National Heritage Fleet. Launched on the Clyde in 1955 Shieldhall was a "dung boat" removing Glasgow's waste products and dumping them out at sea. She



also carried passengers from the poorer parts of the city to give them a day out in the summer months.

Built on classic lines, the original machinery has been retained along with a traditional wheelhouse. In 1985 the ship was withdrawn from commercial service and was purchased by the charity - The Solent Steam Packet Company Limited - and continues as a charitable organisation today. She is based in Southampton and operated by a team of dedicated volunteers.

A full programme of cruises operates from May through to September – full information available online at : <https://ss-shieldhall.co.uk/> or call 023 8155 0242

Many thanks to Paul who stepped in to give the talk when the original two speakers were unable to do the talk.

CALLING ALL BIKE OWNERS

The Police regularly arrange marking events to provide cycle security advice and offer security marking and registration onto BikeRegister's online database.

Registering your bike helps police and retailers to identify and verify the legitimate owner of bikes that have been stolen or are being resold.

It's free!



The next local **Bike Marking Event** run by Hampshire Constabulary is :

Date : **Saturday 18th May**

Time : **10:00 – 14:00**

Where : **Waterlooville Town Centre**, at the Bandstand

APRIL QUIZ RESULTS

21 teams took part in a very successful Quiz evening last month. The results are:

Pos	Team	Points		Pos	Team	Points
1	Quizzers 1	93		=11	French Improvers	69
2	Local History 1	92		=11	Outings 5	69
3	Ten Pin Bowling	90		=11	Wacky Wednesdays	69
4	Rummikub	81		14	Bridge Buddies	68
=5	Birdwatching	79		15	Horndean u3a	64
=5	Portsdown Striders	79		16	Out for Six	63
7	Card Games	74		17	Portsdown	62
8	The Potting Shed	73		18	Carrick Court	60
=9	Badminton	70		19	WAG 3	59
=9	Local History 3	70		20	Sewing	56
				21	Pilates 1	53

CALLING ALL BOOK LOVERS - BOOK GROUP 4 NEEDS YOU!!

We are looking for new members for this really friendly and welcoming group – I know everyone says that but we really are! We meet in Waterlooville library on the 3rd Wednesday of the month at 10am to chat about the book we've just read. You don't need to be a member of the library and you also don't need to buy the books, they are all supplied by the library.

When we meet it really is just a chat without being highbrow. You know when you finish reading a book and you just want to talk about it, check out your thoughts on it; well this is the place to come!

"A book flares into life when it is shared, and squabbled over" according to Roy (Financial Times 2023) – well we don't squabble (!!), but we certainly do love sharing the experience of a book.

Why not give us a try, we will make you most welcome.

To come along for a taster session, to join the group, or for more information contact Barbara Legg (Group Liaison) at a monthly meeting or coffee morning or send an email to groups@waterloovilleu3a.org.uk . Look forward to seeing you!

Julie Ryden

GEOLOGY 2 WENT TO THE ISLE OF WIGHT

In April, the Geology 2 group under the auspices of Mary Reed, undertook a short, but very informative excursion to the Isle of Wight. The landscape of this beautiful island owes much, if not all, to its varied geology from the Cretaceous period (think chalk cliffs and dinosaurs up to 110 million years old) to more recent Palaeogene deposits of sands and clays (at a mere 35-54 million years).



The island is a geologist's paradise with world class sites all over what is termed 'Dinosaur Isle'. No such luck for our group in finding a T Rex (in whole or part), but there's a lot more to the place than the occasional tooth, claw or bone. The sandstones and clay beds at Compton, Colwell and Whitecliff Bays provided an abundance of marine shells for the fossil collectors.



The multi-coloured cliffs at Alum Bay are a sight to behold in themselves, especially when viewed from the invigorating open chair lift ride down to the beach!

At Colwell Bay, the group were part of a joint meeting with the Sidmouth U3A Geology Group where we could share our knowledge of the area.

Searching Colwell Bay with Sidmouth Geology Group



Fossil marine bivalves over 20 million years old!

Gareth Williams, Geology 2

GERMAN CONVERSATION – COME AND JOIN US

The German Conversation Group is looking for new members. We are a small and friendly group, with both native and non-native speakers, and we make sure our sessions work for everyone.

If you have a limited working (or better) proficiency, why not come for a taster? We meet monthly in a member's home a couple of miles beyond Clanfield, usually on the first Tuesday of each month.

Wir freuen uns, Sie zu treffen.

Martin Fulda, Group Coordinator

If you're interested, please get in touch with Barbara Legg (Group Liaison) at a coffee morning, a monthly meeting or by email to groups@waterloovilleu3a.org.uk

COMPUTER HELP



One of our members – Rich Edwards – has offered to help members with any queries or problems related to their computer/tablet/iPad. This is mostly in the form of advice given over the phone or by email. Many problems can be resolved by user intervention. Rich provides this advice free, however he does not offer home visits.

Rich can be contacted, initially, by email at it-advice@waterloovilleu3a.org.uk.

BIRDWATCHERS WENT TO UPPERFORD COPSE

Upperford Copse is about two miles North of Wickham off the A32.

It is a Bluebell Wood par excellence. The copse is on the North end of Hundred Acre Woods which altogether provide a large area for birds and wildlife.

Fifteen of us spent nearly two hours enjoying the sounds of many different birds. Some of us were fortunate enough to see some as well.

Much of our walk was along the old railway line and over the river Meon.

We depended upon apps which identified bird calls (these are easily accessed from the Internet, so anyone can use them on their mobiles.)

We heard 17 different birds and saw a Grey Wagtail at the Meon. Bluetits and Coal tits were seen by some of us.

We ended with drinks at a pub in Wickham Market Square. No rain fell!

Photos were taken by Margaret Whalley.

New members are welcome to join our group - please get in touch with Barbara Legg (Group Liaison) at a coffee morning, a monthly meeting or by email to groups@waterloovilleu3a.org.uk

John Phillips, Group Coordinator



LOCAL HISTORY 1 MEANDERED AROUND CHICHESTER

Our tour started at the cathedral, where our excellent guide showed us 21st century gargoyles, a Nine Men's Morris board carved by pupils in the stonework of the cathedral's cloister and the beautiful Bishop's Palace garden. She described how the city and its walls developed over time and showed and explained details such as the pelican statues at Pallant House and the way in which new frontages had been erected on Tudor buildings in the Pallant. We saw the church of St Andrew in the Oxmarket, damaged by bombs in World War II and also the burial site of the first person to die of the plague in Chichester. We then walked down North Street, while the guide described the history of the buildings with fascinating snippets of information about their construction and use. Our tour finished with tea and cakes at the Buttery tearoom, previously Chichester Guildhall.



Bishop's Palace



At the Buttery



Vicar's Close

Moya Mitchell

NATIONAL U3A ONLINE EVENTS

Throughout every month, national u3a offer many online talks and workshops on a wide variety of topics to keep our minds and bodies going.

The current offerings include :

The Harlem Renaissance	9 th May
AI Chatbots – a beginner's guide	10 th May
Exploring World Faiths : Religious Mysticism	13 th May
Turner's Timeless Treasures	14 th May
Antibiotics – discovery, mechanisms and future issues	15 th May
Mindfulness & Meditation series	16 th May
The Story of the workhouse – Welfare in England before 1948	17 th May
The Stories of Eva & Istvan Wirth	17 th May
Understanding Online Safety – expert tips from AbilityNet	21 st May
Science Network Event	22 nd May
Exploring Our AI-Enhanced Future : Promises and Preparations	22 nd May
Deafness and beyond : the tribulation & triumph of Ludwig van Beethoven	23 rd May
Laughter Yoga with Merrie Maggie	28 th May
Secrets of the Human Brain – Brain, Pain and Anaesthetics	29 th May
Rob Eastway Talk – Much Ado About Numbers	31 st May
Driving on country roads with IAM RoadSmart	31 st May
Taking revenge : Artemisia Gentileschi's Quest for Justice	4 th June
Help Us Remember with the War Memorials Register	7 th June

Click the link below see what's currently available, then click on the event of your choice for full details and how to book: <https://www.u3a.org.uk/events/educational-events>

GROUP MATTERS

To join or leave a group, or for more information :

visit Barbara Legg (Group Liaison) at a monthly meeting or coffee morning or send an email to groups@waterloovilleu3a.org.uk

If a group is full, you can be placed on the waiting list; you will be offered a space when one becomes available and you are at the top of the list. Don't wait to go on a waiting list – popular groups usually have one and being on the waiting list increases your chances of being offered a space.

Have an idea for a new group? Groups don't magically appear – they are born when enough members express an interest in a particular activity and someone (or two) volunteers to act as Group Coordinator. There is a wealth of support for budding groups so get in touch with Barbara Legg and see what happens.

Already a Group Coordinator? THANK YOU! Please keep us up to date with any changes to your group's membership and provide feedback when members are referred to you, this ensures that advertised group vacancies and any waiting lists are as accurate as possible.

GROUPS WITH VACANCIES (as at 3rd May, 2024)

Groups seeking members - register your interest by visiting Barbara Legg at the Groups table at any Coffee Morning or General Meeting or email groups@waterloovilleu3a.org.uk

Activity	When	Activity	When
Art Appreciation	2nd Friday	Line Dancing Improvers	Every Monday
Art History 2	1st Tuesday	Mah Jong 1	1st / 3rd Tuesday
Backgammon	1st / 3rd Monday	Mah Jong 2	2nd / 4th Tuesday
Badminton	1st / 3rd Wednesday	Pub History	3rd Tuesday
Birdwatchers	Last Saturday	Quizzers 2	2nd Wednesday
Board Games 2	3rd Monday	Railways & Transport	3rd Monday
Books 4	3rd Wednesday	Rummikub 2	2nd / 4th Wednesday
Bridge	Every Friday	Science	4th Thursday
Country & Western music	4th Wednesday	Scrabble	1st / 3rd Thursday
Craft	1st Wednesday	Singing For Pleasure	1st / 3rd Wednesday
Cribbage	2nd / 4th Tuesday	Sunday Diners	Variable
Dining Out	2nd Thursday/4th Sunday	Table Tennis (beginners)	3rd Friday
Drawing 2	1st / 3rd Tuesday	Ukulele	Every Thursday
French Beginners	4th Friday	Walking 6 - Strollers	Alternate Friday
French Conversation 2	1st / 3rd Wednesday	Wine Appreciation 2	3rd Monday
French Refreshers	4th Monday	Wine Appreciation 3	1st Tuesday
Genealogy	1st Thursday		

MAY SNIPPETS

(From "*The Almanac*" by Lia Leendertz)

"*Ne'er cast a clout till May be out.*" A "clout" was a piece of clothing – a suggestion not to remove it during the cold weather. There are various interpretations of the rest of the saying – it could mean until the end of the month or until the "may" is out in bloom (hawthorn or may blossom which burst into white frothy flowers in late April and early May).

Bring on the May but don't bring in the may as it's considered unlucky to bring this blossom indoors.

Beware the "*ice saints*" – St. Mamertus, St. Pancras and St. Servatius whose feast days fall on the 11th, 12th and 13th May and who are supposed to bring winter's final blast of cold weather.

23rd May a full moon, this month known as the Mother's Moon, Milk Moon or Bright Moon

25th May St. Urban's Day; "*St. Urban gives the summer*" – a day that is said to predict the whole of the upcoming period

Gardening by the moon :

8th-15th May (*new moon to first quarter*)

The waxing moon is associated with rising vitality and upward growth. Prepare for growth.

15th -23rd May (*first quarter to full moon*)

This is the best time for sowing crops that develop above ground. Pot up or plant out seedlings and young plants. Take cuttings and make grafts but avoid all other pruning. Fertilise.

23rd – 30th May (*full moon to last quarter*)

A "drawing down" energy. This phase is a good time for sowing and planting any crops that develop below ground – root crops, bulbs and perennials.

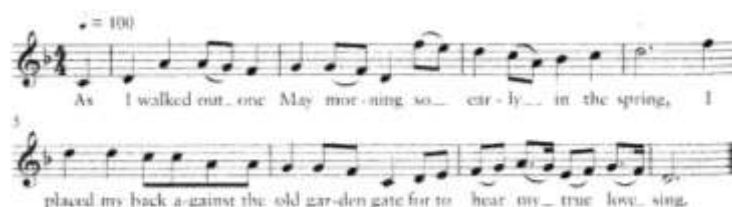
31st May – 6th June (*last quarter to new moon*)

A dormant period with low sap and poor growth. Do not sow or plant. A good time though for pruning while sap is slowed. Weeding now will check growth well. Harvest any crops for storage. Fertilise and mulch the soil.



And for those who are musically inclined – a May folk song - **The Old Garden Gate**

Traditional, arr. Richard Barnard



A beautiful, sad song about a lover's inconstancy, told on a May morning by the garden gate. This tune was a version collected by Ralph Vaughan Williams in 1903. The lyrics are

mainly from an old Wiltshire version collected by Alfred Williams in the early 1900s.

FUTURE DATES FOR YOUR DIARY

(Full details to be published nearer the time)

Our annual Open Day Friday, 9th August – Waterlooville Community Centre

The ever popular Barn Dance Friday 18th October - Cowplain Social Club

Prefer not to receive member bulletins?

We issue regular bulletins to our members to inform them of meetings, social events, group activities, membership information, etc.

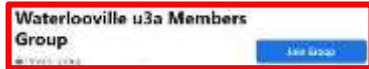
IF YOU DO NOT WISH TO RECEIVE THIS BULLETIN, please let us know so that we can remove your details from the distribution. A confirmation email will be sent to you but you can change your mind at any time and request your details to be added back on to the distribution list.

Members also receive the "Third Age Matters" magazine issued several times a year by the Third Age Trust.

To unsubscribe from either of these, contact our Membership Secretary at members@waterloovilleu3a.org.uk or call 07769 266879.

WU3A FACEBOOK GROUP

We have a private Facebook group that is open to any Waterloooville u3a member. To join, login to Facebook and search for 'Waterlooville u3a Members Group' and request to join. Or click this link



<https://www.facebook.com/groups/WaterloovilleU3A/permalink/5260385320729203/>

NATIONAL U3A FOUND IN NATURE

Any u3a member is welcome to share photos that are "wild and interesting" – with elements of nature or wildlife that are out of the ordinary; or something that has challenged your perception of nature and the world around you.

Photos can be uploaded using the online form reached via the link below, together with a few words about where you found or saw what you've "found in nature".

<https://u3auk.wufoo.com/forms/found-in-nature>



Just a number in a field
Suzanne, Lancaster &
Morecombe



Walking towards the sunset
Kenneth, Huyton



Grey Squirrel
Kieran, Waterloooville

Inquisitive mouse
Graham, Rugby



Nature's colour palette
Ruth, Leigh Estuary

